

# Email Security Red Flags



You receive an email from someone you don't recognize, or unrelated to your job responsibilities.

*Tip: Use extreme caution when you receive unsolicited email offers and fake email replies to messages you never sent.*



You're cc'd on an email sent to people you don't recognize, or to people within your organization whose last names start with the same letter.

*Tip: Be on the lookout for emails that you'd normally get during normal business hours, but sent at an unusual time.*



An unknown sender requests that you open an attachment or click on a link.

*Tip: If you're asked to open a link to avoid a negative consequence or to gain something of value, there's a good chance the link is malicious.*



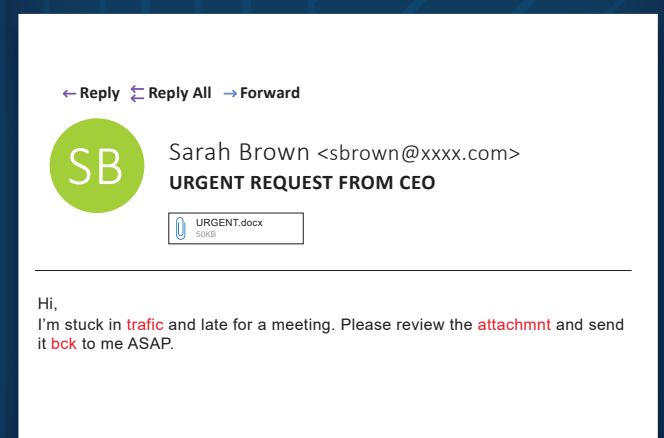
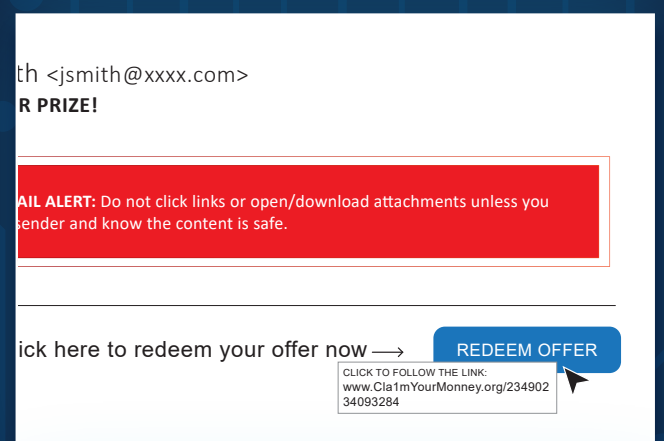
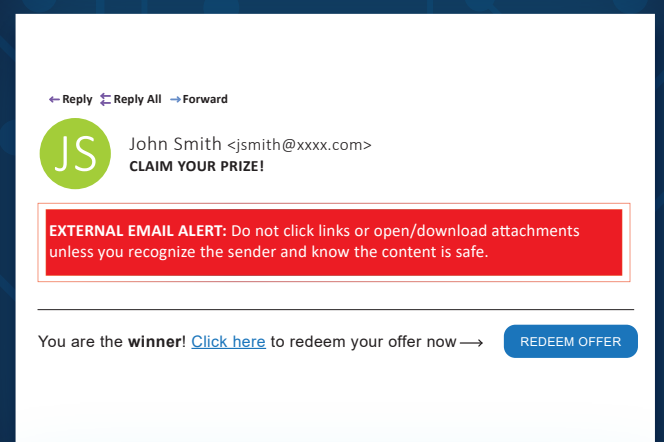
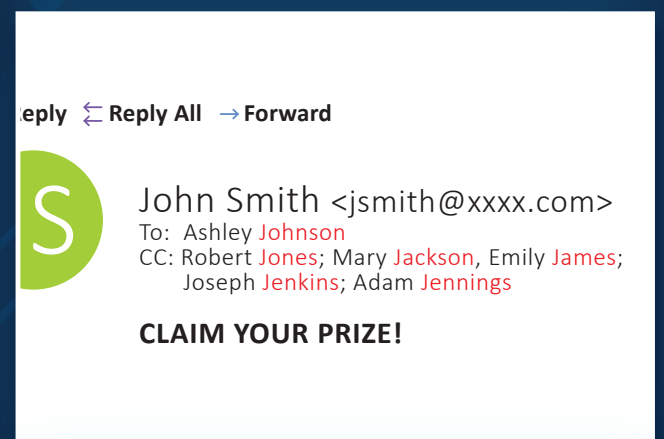
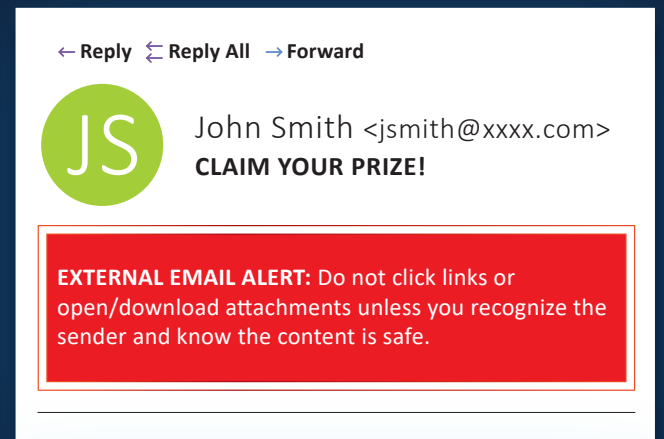
The link-to address is for a different website or looks suspicious (e.g., numbers replacing letters and misspellings.)

*Tip: Always hover over hyperlinks in emails to inspect the link-to address before clicking.*



You receive an email from someone you know that is out of the ordinary or includes bad grammar or spelling errors.

*Tip: Beware of email attachments that seem odd or illogical.*



## NEED MORE GUIDANCE?

Visit [resources.haigroup.com/cybersecurity-center](https://resources.haigroup.com/cybersecurity-center)

Be sure to review your cybersecurity insurance policy with your **insurance professional**.